

Time	Session Title	Name/Job Title	Organisation/Service
------	---------------	----------------	----------------------

Tuesday 20th April 2021

09.00 - 09.15AM	Morning Welcome to Euromet 2021	Melissa Milner, Director of Communications and Engagement	Catch22
09.15 - 09.45 AM	Opening Address	Chris Wright, CEO & Jan- Eric Josefsson, Chair	Catch22 & Euromet
09.45 - 10.15 AM	Keynote Speaker - Young people and COVID-19 recovery: The role of business	Sam Olsen, CEO	Movement to Work
10.30 - 11.15 AM *	Workshops x 7		
	Personalise, Prioritise & Plan. Changing the way we think about digital learning	Christopher Pickering, Programme Lead AND Hazel Beckett, Contract Manager, East Midlands	Catch22 and National Citizen Service
	Using social pedagogy in children's homes in the UK, inspired by Western European practices	Emmanuel Akpan-Inwang, Programme Director	Lighthouse Children's Homes
	School after lockdown – getting young people and families back on track	Markus Nieminen, Family Support Specialist	Nuorten Ystävät/ Friends of the Young (FINLAND)
	Catch22 College: Delivering vocational qualifications in an online setting	Alex Stoddart, Assistant Director	Catch22 Colleges
	Support model as a strategy for socio-educational or socio-occupational action with adolescents and young people without family references.	Gemma Baez Vilella, Social Educator	Suara - Catalonia
	Encouraging Experiences – How to support young immigrants into working life	Mari Karjanlahti, Development Director, Marjo Kangas, Social Counsellor and Kelvin Godwin, Expert by Experience	The Federation of Special Welfare Organisations (EHJÄ ry) FINLAND
	Positive impacts of COVID-19: improving employability provision during a pandemic	Stacey Wright, Service Manager	Catch22 Employability Team
1.20 - 1.30PM	Afternoon Welcome to Euromet 2021	Melissa Milner, Director of Communications and Engagement	Catch22
1.30 - 2.15PM	Panel Discussion - Youth employment: skilling up for the future	Lindsay Waite, Emma Allix and Christina Hicks & 3 Young people	Catch22
2.30 - 3.15 PM	Workshops x 7 - Morning workshops repeated		

Booths remain open until 4pm

CLOSE

20 – 22 April 2021

Time	Session Title	Name/Job Title	Organisation/Service
------	---------------	----------------	----------------------

Wednesday 21st April 2021

09.30 - 09.40AM	Morning Welcome to Euromet 2021	Melissa Milner, Director of Communications and Engagement	Catch22
09.40 - 10.15AM	Keynote Speaker	Dr Alexandra Burton, Senior Research Fellow in Behavioural Science and Health	University College London
10.30 - 11.15 AM *	Workshops x 6		
	National Leaving Care Benchmarking Forum: A model for sharing good practice & influencing policy around care leavers – including our response to Covid and the post Covid world.	Hannah McCowen, NLCBF Manager, Matt Clayton, Operational Lead Through Care & Edge of Care and Billie Jo Thompson, Sessional Worker	Catch22 NLCBF & Coventry City Council
	More than Mentors – Early action approach to children and young people’s mental health through peer support	Jason Turner, Programme Manager, Dr Nick Barnes, Young People’s Psychiatrist and Cognitive Analytic Therapist, Dr Graziella Fergio, Clinical Director, Strategic Minds	Community Links, Catch22
	The impact of the pandemic on young people’s mental health	Geoffrey Kasozi, David Johnson-Morgan, Programme managers & Kirsty Magahy Assistant Director	Community Links & Young People & Families Catch22
	The Impact of Covid-19 on Children and Young People who misuse substances	Tracy Scares & Julie Poling, Service Managers	Catch22 YP&F Substance Misuse Services
	eClubhouses – supporting mental health and wellbeing online during a pandemic	Taija Hirvonen, Head Job Coach at Clubhouse Pönnkä	Oulu Finland
	Resilience Circles	Michael Michiels, Trainer and Practitioner	VZW ORANJEHUIS
1.20 - 1.30PM	Afternoon Welcome to Euromet 2021	Melissa Milner, Director of Communications and Engagement	Catch22
1.30 - 2.15PM	Panel Discussion - The impact of the pandemic on young people’s mental health and wellbeing	Martina Kane, Policy & Engagement Manager, Dr Tania Rodrigues, Consultant Clinical Psychologist, Hannah Parker, Mental Health First Aid trainer, Kirsty Magahy, Assistant Director YP&F London, Melissa Milner, Director of Communications and Engagement	The Health Foundation Catch22
2.30 - 3.15 PM	Workshops x6 Morning workshops repeated		

Booths remain open until 4pm
CLOSE

*Workshops will run for 45 minutes but will be scheduled for an hour to allow for overrun

20 – 22 April 2021

Time Session Title Name/Job Title Organisation/Service

Thursday 22nd April 2021			
09.30 - 09.40AM	Morning Welcome to Euromet 2021	Melissa Milner, Director of Communications and Engagement	Catch22
09.40- 10.15AM	Keynote Speaker - Digital by Default': The Impact of the COVID-19 Pandemic on Young People's Experiences Online	Dr Faith Gordon, Senior Lecturer in Law at the ANU College of Law	The Australian National University
10.30 - 11.30AM *	Workshops x 6		
	Joint working with Catch22 Child Criminal Exploitation Service and Lived Experience Mentors	Nigel Sargeant and Saint Sterling, Founder and Director	Catch22 Stoke & Staffs CE/MFH Service and Real Service
	Locked Down or Locked Up? Preventing young people's involvement in crime during a period of heightened isolation.	Ryan Karter, Mary Grimes & Jamie Linney, Project Workers	Catch22 Music to My Ears programme
	Gangs: Prevention, Intervention & Exit: An insight as to the multi-faceted approach Catch22 takes to tackle Serious Youth Violence & pro Criminal Lifestyles	Matt Randle, Joe Raby, Simon Grant, Aaron Jaw, James Gwilt, Tara Ward and Tamara de Silva, Assistant Director	Catch22 Justice
	Doom and Zoom – can we truly connect? Understanding the existential crisis at the heart of COVID-19 in the context of Children & Young People in care.	Dr Tania Rodrigues, Consultant Clinical Psychologist & Brook Laing, Assistant Psychologist	Catch22 Coventry Life Long Links
	The Social Switch Project - Digital Youth Work Training	Kristina Andrulyte, Training Facilitator and Project Coordinator	Redthread
	A new approach to working restoratively in YOIs <i>MORNING SESSION ONLY</i>	Charlotte Calkin, Director	Restorative Engagement Forum
1.20 - 1.30PM	Afternoon Welcome to Euromet 2021	Melissa Milner, Director of Communications and Engagement	Catch22
1.30 - 2.15PM	Keynote Speaker - My worries and hopes for our young people in Post-Pandemic Britain	Luke Billingham, Youth and Community Worker and Youth Justice Researcher	Hackney Quest
2.30 - 3.30PM	Workshops x 5 Morning workshops repeated		
3.30 - 3.35PM	Round Up	Melissa Milner, Director of Communications and Engagement	Catch22
3.35 - 4.00PM	Closing Address	Chris Wright, CEO & Jan- Eric Josefsson, Chair	Keynote speech

CLOSE

*Workshops will run for 45 minutes but will be scheduled for an an hour to allow for overrun

**Akpan-Inwang, Emmanuel**

Emmanuel is the Founder and Director of Lighthouse - a charity committed to improving outcomes for children in care by setting up education-focused children's homes.

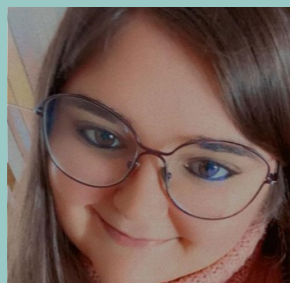
After graduating, Emmanuel joined the Teach First Leadership Development Programme and taught English at a secondary school in Birmingham. Towards the end of his time teaching, Emmanuel began to research the English children's social care sector, comparing it to models in other Western European countries. In 2017 he was awarded a Winston Churchill Memorial Fellowship which he used to study children's homes in Germany and Denmark. Lighthouse is based on the outcomes of this research.

**Allix, Emma**

Emma has more than 12 years' experience of working within the Employability sector. She began her career in response to the financial recession in 2008 working for the DWP. Emma went on to successfully manage and develop publicly funded and private sector programmes. Joining Catch22 in 2018., Emma is responsible for a diverse range of Employability programmes focussed on achieving the best sustainable outcomes for those hardest to reach. With a passion for positive changes for social impact and social mobility, Emma is committed to making a meaningful and lasting difference to the communities that Catch22 serve.

**Andrulyte, Kristina**

Kristina Andrulyte is a Training Facilitator at The Social Switch Project. She delivers training sessions to professionals working with young people on the challenges and opportunities of social media. She is passionate about changing the narrative on how the world of social media is understood by youth workers, teachers, police officers and other professionals, and focuses not just on online harms, but on the ways social media can enrich a young person's life, help them develop skills and express their creativity.

**Baez Vilella, Gemma**

Degree in Pedagogy. Rovira i Virgili University. 2016 and Degree in Social Education. Rovira i Virgili University. 2015 – 2019 Southern Illinois University. August - December 2018 (ISEP Mobility Scholarship)

She is currently working as a Social Educator in a foster Center for children and young people. Terres de l'Ebre (Catalonia)

**Barnes, Dr Nick**

Dr Nick Barnes - Nick is a young people's psychiatrist and cognitive analytic therapist who has worked in child and adolescent mental health services for over 20 years. He was also recently appointed as Honorary Associate Professor within the Department of Clinical, Educational and Health Psychology at University College London. Nick has been involved in the co-development and co-design of the More than Mentors from its very inception back in 2015, and has offered ongoing strategic oversight to the delivery, evaluation and co-learning from this model of peer mentoring. His focus has been to ensure peer

**Billingham, Luke**

Luke Billingham is a youth and community worker at Hackney Quest, a long-running grassroots charity in Hackney, and a researcher on an ESRC-funded project looking at the public health approach to violence reduction. At Hackney Quest, Luke is involved with mentoring, exclusion prevention, youth voice and community development projects. Prior to taking up the researcher role, Luke spent four years helping to set up Reach Children's Hub, an innovative new charity providing cradle-to-career support for children and young people based within Reach Academy Feltham, in South-West London. Luke is a trustee of Haven Distribution, the books to prisoners charity, and a volunteer mentor for criminal justice charities Longford Trust and New Bridge.

**Burton, Dr Alexandra**

Dr Alexandra Burton is a Senior Research Fellow in the Department of Behavioural Science and Health at University College London. She uses qualitative methods to study the impact of social isolation and social support on mental and physical health and is interested in the development and evaluation of social support interventions that improve outcomes for people with mental health problems. She is currently leading the qualitative evaluation of a large implementation trial exploring the experiences of new mothers with postnatal depression who take part in group singing sessions (Shaper-PND) and has been working on studies that explore the impact of social isolation and social restriction measures on mental health and well-being during the COVID-19 pandemic.

**Calkin, Charlotte**

Charlotte has worked in the restorative world for over 10 years as a trainer, facilitator and consultant and is an expert in both the fields of restorative justice (RJ) and restorative practice (RP). She has delivered restorative justice workshops at the UN Commission on Crime Prevention and Criminal Justice in Vienna in 2018 and at the TEDSummit in Canada in 2017. She speaks widely at conferences and also introduced the topic of RJ to

the Justice Select Committee Enquiry. Her organisation, REF, are currently working with 35 organisations across all sectors embedding a restorative culture. In 2019 she spent a year with the British Council in Colombia; working with young offenders on a restorative justice community re-integration project in the city of Cali. Charlotte has a Masters in Applied Criminology from Cambridge University.

Accredited Restorative Justice Practitioner since 2012 (expertise in Complex and Sensitive Cases)
Quality Mark for RJ and RP Training Provider with the Restorative Justice Council
Executive Coach with the ICF

RJ Ambassador (one of 50) for the Restorative Justice Council
Howard League Award for Restorative Approaches 2016
MSt in Criminology at Cambridge analysing Restorative Practice
in UK prisons with a comparison to RP in schools.
Charlotte was also the curator of TEDxYouth@Bath from 2010 to
2018, the largest of which was for 1400 students.



Clayton, Matt

Matt Clayton is Operational Lead for Through Care & Edge of Care at Coventry City Council. Matt has had led Coventry's services to care leavers for a number of years and has developed the service to have a strong national reputation for its innovative practice with care leavers at the centre. This has included leading on the BAFTA nominated documentary Superkids, piloting the first automatic water bill discount to care leavers and the rollout of social media in social work practice in Coventry. Matt is chair of the West Midlands regional care leavers forum and part of the national NLCBF steering group. He has supported a number of other local authorities in improving their offers to care leavers.



Ferigo, Dr Graziella

Dr Graziella Ferigo is the Clinical Director of Strategic Mind LTD, is a Chartered Clinical Psychologist accredited with the Health and Care Professions Council and with the British Psychological Society (BPS).

She She has worked with Community Links supporting the development of - More than Mentors programme and providing clinical supervision since 2017.

She has worked as a Clinical Psychologist and Psychotherapist in London both in the private and in the public sectors (NHS - North East London Foundation Trust, West London Foundation Trust, East London Foundation (ELFT) Trust and Springfield University Hospital) since 2007.

She had undertaken her training in Clinical Psychology at the University of Bologna and clinical placement at the Department of Mental Health – Ca'Granda Niguarda Hospital – Milano. In 2004 she had completed her training in Brief Strategic Therapy -School in Brief Strategic Therapy in Arezzo- founded by Paul Watzlawick and Giorgio Nardone. Furthermore she had undertaken her training in: Legal Psychology - Milano (2004), Interpersonal Therapy (University of Reading in 2014), Non Violence Resistance in 2017 (ELFT), Expert Witness (BPS) in 2017 and In January 2018 she has completed her advanced supervision training in psychology at UEL.



Godwin, Kelvin

My name is Kelvin Godwin and I'm 16 years old. I'm from Nigeria and I have been in Finland now for two years. I am in secondary school at 9th grade, and I work with distributing advertisements and newspapers. I've been working there for six months and Encouraging Experiences helped me to find the job.

Ireland, which involved over 170 children and young people, as well as industry professionals and youth advocates. She is

a former Trustee of Headliners UK, a youth and media charity. Faith's current research has been funded by the Australian Research Council, the Australasian Institute for Judicial Administration and the Society of Legal Scholars (UK).



Gordon, Dr Faith

Dr Faith Gordon FRSA, FHEA, FRSA, PhD, MSSc, PGCert, LL.B., LNEA, is a Senior Lecturer in Law at the ANU College of Law, The Australian National University. Faith is the Director of the Interdisciplinary International Youth Justice Network which she established in 2016. She is also an Associate Research Fellow at the Information Law and Policy Centre, Institute of Advanced Legal Studies, London. Faith has international expertise in youth justice; media representations; children's rights; criminal law; digital technologies; regulation and privacy law and has held visiting positions at Oxford University, UCL and Queen's University.

Faith was lead researcher on large-scale ESRC Knowledge Exchange Project: Identifying and Challenging the Negative Media Representation of Children and Young People in Northern Ireland, which involved over 170 children and young people, as well as industry professionals and youth advocates. She is a former Trustee of Headliners UK, a youth and media charity. Faith's current research has been funded by the Australian Research Council, the Australasian Institute for Judicial Administration and the Society of Legal Scholars (UK) Faith has extensively published including a monograph, edited collection, peer-reviewed articles, book chapters, case notes and book reviews. She is a regular expert commentator in the media on issues including children's rights and youth justice. She also sits on a number of international editorial boards.

Faith has recently published on the topics of online harms, lifelong anonymity and pre-charge identification of minors in the digital age. This research has been utilised by legal practitioners in the UK, Northern Ireland and Australia. In particular, her research on police release of children's images has generated direct impact and has been referred to by the UN Committee on the Rights of the Child (2015), in the Northern Ireland High Court and in the UK Court of Appeal (2019). Faith's research has been awarded a number of national and international prizes.



Grimes, Mary

Mary joined the Music to My Ears project at Catch 22 in November 2019. Her role as project worker involves working with young people at risk of criminal justice via 121 weekly media-based sessions used as a measure used to prevent young people from re-/offending. These sessions can be focused on a variety of media skills including music production, photography & video-editing which are skills she learnt during her 3 year media course at Kingston College prior to her joining the team. Outside of her role at Music to My Ears, she also hosts a weekly radio show on community radio station Kane FM with a listenership of 10,000+ per show. She utilizes these radio and presenting skills throughout her role at Catch 22, sometimes giving young people the opportunity to have their music played on her show.

**Teresa Häkki**

My name is Teresa and I am a member of Oulu Clubhouse, klubitalo Pönkkä. I have been member there now more than 3 years and it has really helped me. In Finnish this word Pönkkä means in English "a support tree wedged between the supported and the ground." I think I have got better support and help from my Clubhouse than from public health care. I am able to do things which give me joy despite this Covid pandemic and I get a chance to meet lovely people every day. I specifically like gardening, exercise, arts and other Clubhouse work activities.

**Hicks, Christina**

Christina is a JNC qualified Youth Work professional, passionate about the development of young people as active citizens that have a valid contribution to make to society. She has designed and developed award-winning programmes, implemented and embedded youth boards and forums, devised accreditation and evaluation frameworks, all alongside facilitating youth mentoring and 1-2-1 casework.

With a focus on achieving Catch22's vision on supporting 20,000 young people with complex barriers into work over the next three years, she now manages and delivers national public and corporate funded programmes with overall accountability for financial, contractual and operational performance of contracts worth in excess of £3m.

**Johnson-Morgan, David**

David Johnson-Morgan is a Project Officer working for Community Links on health projects since June 2019. Since May 2020, he has been on secondment in the role of Community Connector working for the East London Foundation Trust in the borough of Newham. David has delivered projects for the Newham Clinical Commissioning Group, raising cancer awareness in the local population and for the Newham GP Federation, acquiring and analysing feedback from local GP patients.

He was previously employed by the Guardian News and Media Group in London in an editorial capacity (Health, Arts & Culture, Cities & Global Development desks) and by a GP federation in Bristol as a Special Projects Manager.

David completed his undergraduate degree in Biological Sciences at the University of Warwick and recently received a Master's in Public Health Policy from City, University of London.

David's published research includes a systematic review of the effectiveness of social prescribing for alleviating loneliness and isolation in the elderly, as well as a critical synthesis of punctuated equilibrium theory as applied to UK and EU legislation on Deprivation of Liberty/Liberty Protection Safeguards.

**Josefsson, Jan-Eric**

Until last December (2020) I was planning director and deputy General Director/Chief Executive at the Swedish National Board of Institutional Care (also named SiS). I've been in that service since



2010 and before that more than three decades in the Swedish Prison and Probation Service. I'm Bachelor of Science in Social work and Politics and have been acting chief since 1990.

Kane, Martina

Martina joined the Health Foundation in May 2017 as Policy and Engagement Manager. She leads the Young People's Future Health inquiry. Martina spent more than 10 years working in policy roles for patient organisations, most recently at Alzheimer's Society and before that at Rethink Mental Illness. Martina is a trained psychodynamic counsellor.

**Kangas, Marjo**

My name is Marjo Kangas and I am working as a Social Counsellor in The Federation of Special Welfare Organisations (EHJÄ ry) which is a national child protection organisation in Finland. I graduated as a Bachelor of Social Services in spring 2019 in Vaasa University of Applied Sciences. I have been working in EHJÄ ry/Vaasa since 2018 where I have been working with supporting the young people in different ways.

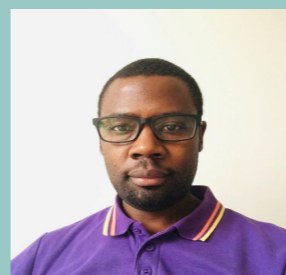
**Karjanlahti, Mari**

My name is Mari Karjanlahti. I graduated as a Bachelor in Social Services in 2007 in Vaasa University of Applied Sciences. I have been working as Development Manager of Encouraging Experiences since 2018 and in EHJÄ ry/Vaasa since 2009. Encouraging Experiences is a part of the work of The Federation of Special Welfare Organisations (EHJÄ ry).

The aim of our work is to help 14–29 years old young immigrants into the working life. We also do collaboration with employers and help young jobseekers and employers to meet each other. Our youngsters are motivated and it is a great joy working with them!

**Karter, Ryan**

Hello, my name is Ryan Karter and I have been a Youth Worker since 2009. I graduated with an MA in Community and Youth Work from Goldsmiths University in 2012. Currently I am a Project Worker for the MTME team at Catch22 Surrey. I support young offenders and young people who are at risk of becoming involved in the youth criminal justice system. We use both 1:1 mentoring and deliver educational group workshops in schools, to keep young people out of crime and re-engage them back into society.

**Kasozi, Geoffrey**

I work as a Community Connector with East London Foundation Trust (ELFT) in Newham PCN South One, seconded by Community Links. I have been in this role for just over 10 months now. I support patients 18 years and over who are diagnosed with Serious Mental Illness (SMI) OR those with a degree of Emotional Complex Needs. The entire period of my service has been impacted with Covid-19 directly or indirectly. For example; patients, losing jobs, being isolated, suffering bereavement, students' anxiety, patients seeking information on Covid-19 or a lack of access to services due to lockdown. I have also got to be working from home although my

role was meant to be practiced in the local community. I receive referrals from the lead and psychiatric Nurses after carrying out an initial assessment and identifying the social needs of an individual.

My task is therefore to create an environment through conversations with various patients and helping them see opportunities from situations. I give patients time and empower them to take control of their health and well-being. Taking a holistic approach, I focus on what matters to the individual and connect them to community groups and statutory services for practical and emotional needs through signposting.

Support to patients is on a case to case basis and tailored to each individual's needs.

Brooke Laing

Brook is a Trainee Counselling Psychologist and counsellor practicing with adults and young people in the UK. His primary interest is the role of social and cultural systems in the facilitation and maintenance of trauma, and the unique opportunity held by psychologists and other health-and-social professionals to dismantle those systems and create a more collaborative, kind and human care profession. Brook is currently carrying out his doctoral research on the impact of COVID-19 lockdown on how psychotherapy clients engage with existential themes such as mortality, meaning and responsibility in their lives.



Linney, Jamie

Jamie Linney, 23 years old. Music To My Ears project worker. Based in Surrey.



Magahy, Kirsty

Kirsty Magahy is the Assistant Director at Catch22 and has worked for the organisation for 6 years. Kirsty has nearly 15 years of experience working across the voluntary and public sectors in the UK and oversees specialising in health and wellbeing and human rights. Kirsty has worked across operations, service development, co-production, safeguarding and people management. Since joining Catch22 Kirsty has implemented, developed and managed the flagship Camden service – The Hive -specialising in a holistic mental health and wellbeing service for young people aged 16 to 24 Camden, which is sited in the NHS long term plan as an example of best practise in delivering mental health services to young people. She is also overseeing the Camden Young People's Mediation service and Wandsworth substance misuse and emotional health counselling service for children aged 12 to 18 year old.



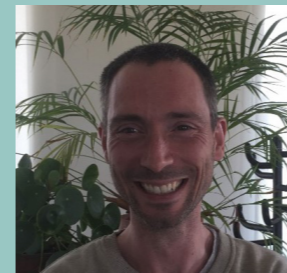
McCowen, Hannah

National Leaving Care Benchmarking Forum Manager, Catch 22 Hannah is the National Leaving Care Benchmarking Forum (NLCBF) Manager at Catch 22. The forum has 120 local authority leaving care team members and works to share best practice and improve outcomes for young people leaving care. This is achieved through regular events for young people and leaving care professionals; engaging with care leavers through the Young

Person's Benchmarking Forum and working closely with the Department for Education, Ofsted, other government departments and leaving care organisations.

Prior to this role, Hannah has held a number of different roles including Fundraising and Communications Manager for a regional charity, developing an award-winning tenancy skills programme and working directly with young people in a Supported Lodgings project. Throughout these roles, she has maintained a particular interest around improving support for care leavers.

Hannah lives in Liverpool with her husband Jon and loves gardening, going to the beach and open-water swimming in the Liverpool docks in the summer.



Michiels, Michael

Michael is one of the pioneers in Restorative Practices in Flanders. After his studies in Communication Sciences and Comparative Science of Cultures, from 2003-2005 he worked for the International Institute for Restorative Practices in a school for minor delinquents in Pennsylvania (US). He brought his expertise and experience to Belgium, where he was part of the founding of Ligand and later the Flemish Forum for Restorative Practices in Schools. From 2009-2012 he worked in Hull, a city in the North of England, where he supported the project "the first restorative city."

Nowadays, Michael works as a trainer and practitioner for Ligand. Ligand is a soulful team that trains and supports organizations (education, youth care, refugee and detention centers) in dealing with conflicts and crisis situations. Together with their mother organization Oranjehuis they are striving to increase capabilities for children, families and professionals.

Michael is also the driving force behind Fatima, a former monastery in Kortrijk. Together with his colleagues he created a space for meeting, stillness and creation. The Circles of Resilience is their newest innovation. Michael is also co-author of the books Samen-wijs! (Acco,2014) and Beter Samen! (2020, Acco).



Milner, Melissa

Melissa has more than 15 years' experience working in marketing, communications and policy. She began her career in a small communications agency, working with non-profit organisations to raise their profile in the media, influence policy and develop campaigns. Most recently she was Head of External Affairs the Royal College of Paediatrics and Child Health, working on campaigns including tackling child obesity and launching an annual 'state of child health' report to map the UK's provision against that of other countries.

At Catch22, she is responsible for overseeing all communications and marketing activity – including web, digital, policy and public affairs, media, design and marketing activity.

Melissa is a keen saxophonist, enjoys watching and playing sport and is kept on her toes by her two young sons!

**Nieminen, Markus**

Hi there! My name is Markus and currently I work as a Family Support Specialist at Nuorten Ystävät (Friends of the Young) in Oulu, Finland.

I am a part of a project which offers support and guidance for two comprehensive schools in our area. Our project is funded by Funding Centre for Social Welfare and Health Organisations in Finland. We work with pupils and their parents. Primarily we focus on diverse guidance of parenthood, psychoeducation and strengthening of self-regulation and emotional skills.

My educational background is in educational science and I have a Bachelors degree in early childhood education from the University of Helsinki and a Masters degree in general education from the University of Oulu with a minor in psychology. My main interests in working life are development, learning, self-regulation and emotional skills.

**Olsen, Sam**

Sam Olsen has a breadth of experience across private and public sector, currently on a two-year secondment to act as Chief Executive Officer for the charity Movement to Work. An experienced Whitehall senior civil servant, she has run a number of major projects access government with drive and passion to develop diverse teams and championing inclusion and diversity across the department.

The majority of her career however has been in the private sector having spent over 10 years working with Virgin Atlantic - highlights including the start-up of Virgin Nigeria whilst living in Lagos as Regional Director for Africa and developing a multi-national sales team.

Sam is also the Chair of HENRY a charity established to support healthy eating and exercise in young children. Sam is also an active volunteer with the Rugby Football Union (RFU) supporting safeguarding in the sport.

**Parker, Hannah**

Hannah Parker is a Training Manager with Catch22 and has been with the organisation almost 3 years. In her role she is responsible for developing, producing and delivering various elements of the Catch22 training offer. Hannah has a background in cognitive behavioural therapeutic interventions with offenders, drug and alcohol recovery and training of both staff and service users, having worked in both community and custody settings. She has a keen interest in emotional wellbeing and creating a positive culture around mental health. Most recently Hannah has qualified as an Instructor Member with MHFA England and is now able to deliver the Mental Health First Aid 2 day qualification to colleagues within Catch22.

Pitkänen, Tiia

My name is Tiia Pitkänen. I'm a student at Centria University of Applies Sciences, I study to become a Bachelor of Social Services.

**Poling, Julie**

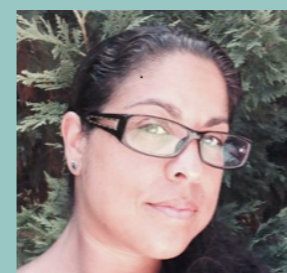
I am the Service Manager for the Hampshire Young Person's substance misuse service. I have worked in the service since 2002, starting as a practitioner then moving into a Senior practitioner role in 2009 and then the SM role in 2020. I wanted to work with Substance Users from the age of 16 following in the footsteps of my Uncle who was working in a Drug Service during the 1980's. I have a degree in Health Promotion and am particularly interested in Attachment Theory and the potential relationship between maternal post natal depression and opiate use in young people. I love working with the most chaotic and difficult to engage young people and feel passionate about developing, motivating and nurturing my team, especially during the global pandemic. In my spare time I like to bake and decorate cakes and I love Formula 1!

**Randle, Matt**

Matt started with Catch22 in March 2013, where he initially worked on the frontline as a Custody Case Manager within our Thameside OMU service. Matt was subsequently promoted to a number of Operational Management posts spanning London-based OMU and TTG Resettlement contracts. In 2016, Matt was promoted to Senior Operations Manager, then in 2018 to Assistant Director which saw his portfolio of services extended to include gangs and violence reduction, OMU and London TTG services.

Prior to joining Catch22 Matt worked in Edinburgh, which provided him with invaluable experience working within the Scottish Justice system. He also possesses a degree within Criminal Justice Studies with International Relations, and is keen to ensure that evidence-based practice underpins our service delivery.

Matt has a particular interest in finding innovative methods to quantify impact to ensure services are delivering cost effective, tangible and high quality services. Matt also possesses a passion for prison reform and tackling youth violence.

**Rodriguez, Dr Tania**

I am a Consultant Clinical Psychologist with over 20 years' experience working in forensic mental health services, prison services and in the community with children, young people & families. I have started my career in South Africa working in a post-Apartheid context and became very interested in the areas of trauma, gender-based and sexual violence and social justice.

In the UK i have held several roles as Clinical service lead within forensic mental health and prison services and have worked as the clinical lead for a project tackling child sexual exploitation in the community.

I specialise in the assessment and treatment of psychiatric and psychological conditions but take on a holistic and trauma informed approach to understanding human suffering and emotional experiences. Working across the community, mental health and prison services has given me insight into the missed opportunities when working with young vulnerable people and the need to upskill professionals in better understand the impact of trauma not only on those we work with but also on how it impacts on our views and practices. I am passionate about supporting colleagues in developing their skills and reflect on issues that affect their daily practice.

Sargeant, Nigel

Hello, I'm Nigel and I'm a former detective having served for 30 years with Staffordshire Police. I have worked within Local CID offices, Force Drugs unit, Covert Policing units conducting enquiries abroad, and whilst with the Major Investigation Department investigated the most serious of crimes including murder and offences against Children. Upon retiring from the Police in 2013, I managed a Commissioned Sexual Exploitation service within Stoke-on-Trent and three areas of Staffordshire. Until 2017 when Catch22 were awarded the commissioned service. I am now the Service Manager for Catch22, with overall responsibility for 30 staff who complete return home interviews for those children who have been previously reported missing from home to the police. The service provides support for children who have been identified as being at risk of CSE, Child Sexual Exploitation and CCE Child Criminal Exploitation. I have a passion for developing and promoting Child Exploitation awareness to reduce the risks posed to children and to keep them safe.

Tracy Scares

Tracy is the service manager for Catch22 Surrey Young People's Substance Misuse Service, and Music to my Ears project.

Previously I worked for statutory services for nearly 25 years, and have significant experience in working with children and young people with mental health and substance misuse issues. I have an MA in Youth and Community Work from Brunel University, and undertook a Certificate in Drug Intervention Studies and Young People through Manchester University. My first role solely with substance misuse was in 2003 as a youth drug and alcohol worker employed on a project that worked with children and young people in schools. In 2005 I joined Surrey Youth Justice Service as a substance misuse worker, which then led to becoming the health lead for Surrey Family Services; this included substance misuse, sexual health and relationships, emotional wellbeing and mental health. I have also been leading a detached youth work project for 20 years, which involves standing in a field once a week; basically my entire professional world revolves around children

and young people and a desire to be able to make a difference.

Sterling, Saint

Saint Sterling is the founder and director of Real-Services a lived experienced youth engagement service which provides bespoke responsive support for young people and adults. Growing up Saint was exposed to domestic violence, family separation, abandoned at 13 years old, leading him to be taken into the care system, during this time he was groomed and recruited into criminality. He was exposed and introduced to organised crime and violence leading him to spend most of his teenage years in prison for substance supply, commercial burglaries, robbery, dealer on dealer crime and elicited earnings. He has lost friends to serious violence, suicide and life sentences and even had to bury his dad while serving time in prison. This changed something within Saint leading him to step away from urban street crime and instead focusing on helping himself and others.

He had no schooling but was able to complete level 3 diplomas in counselling & psychotherapy and substance misuse, and further undertook his criminology & psychology honours degree while volunteering his time mentoring young people away from UK street gangs.

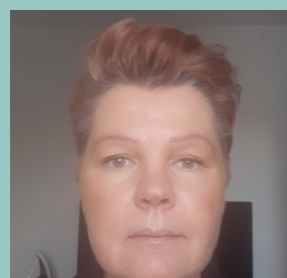
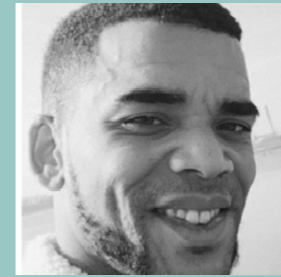
He later gained employment working with inmates in prison to advocate positive change and reduce violence between inmates and influence changes to the regimes. He later gained a position for the (CRC) National Probation Service as a programme facilitator, being trained in cognitive behaviour therapy to deliver court awarded programme interventions. Coming from the background he did Saint could see gaps in services which were required to support young people, so with a lot of hard work and dedication he built Real-Services to deliver trauma informed practice whilst mentoring young people to make positive changes to their lives.

Stoddart, Alex

My name is Alex Stoddart and I am the Assistant Director of Catch22 College. We have 7 Colleges across the country delivering Functional Skills English and Maths and GCSE as well as a range of Vocational Qualifications to young people aged 14-19. I have worked for Catch 22 since 2006, originally as a volunteer youth worker and have worked my way through a variety of roles to where I am now. I have been very fortunate to undertake a variety of qualifications whilst employed with Catch22 from my original Youth Work qualification, to a teaching qualification and most recently a Chartered Management Degree. I am passionate about making a difference to young people's lives and am proud to work for an organisation which does such important and powerful work.

Turner, Jason

Jason Turner is the Youth and Employability programme manager at East London based, social action charity Community Links and has been with the organisation since 2005.



Jason has over 15 years' experience working with children and young people, experience includes delivering face to face youth work & tutoring, alongside designing, developing, and managing youth, employability and community programmes in Newham and surrounding London Boroughs.

Jason is passionate that youth work should be used as an enabler and a mechanism to nurture, guide and develop young people by creating access & exposure to different opportunities and experiences.

He has led and managed several exciting projects whilst at Community Links, one being a flagship Olympic legacy programme - FRE Flyers Hockey Project, which pre London Olympics brought the Great Britain Olympic Men's Hockey team to Newham, coaching and mentoring 30 young people from Newham & Tower Hamlets, with the programme continuing post London 2012.

More recently since 2016 he has been managing the two time award nominated More than Mentors programme, a psychologically informed model of peer mentoring which aims to support children & young people's mental health through the medium of youth work, working with over 1,500 young people to date.



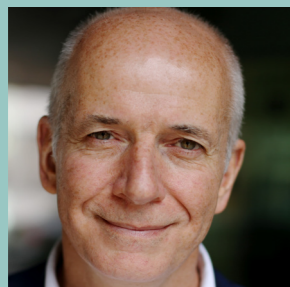
Waite, Lindsay

Lindsay has 10 years management experience and has had 5 years in employability. She began her career in the Hospitality industry as a manager and after 10 years decided to retrain to deliver apprenticeships in this industry. She then found a passion for delivering traineeships and employability skills to young people and since then has been a keyworker and an employment advisor.

At Catch22, she is a service manager responsible for overseeing a team of 16 who deliver services to people who have lost their jobs due to covid-19.

Lindsay approaches every day with a positive mindset, enjoys meditation and reading up on self-development.

My passions and values sit heavily within the true meanings of equality and diversity – celebrating differences, and empowering others to live a fulfilled and purposeful life.



Wright, Chris

Chris Wright is Chief Executive of Catch22, the social business driving public service reform. He leads the team of 1,800 staff and volunteers that supports over 100,000 people nationally.

With 35 years' experience across the social care and criminal justice systems, his background spans practice (Chris originally trained as a social worker and probation officer, establishing Nottingham's first multi-agency Youth Offending Team) and policy (as Head of Performance at the Youth Justice Board).

Chris has long advocated the need for radical reform of a wide range of public services. Under his leadership, Catch22 has not only delivered significant frontline impact but has grown its work supporting others to transform their services; from advising government behind closed doors through to supporting and investing in big ideas and small delivery charities.

Chris is a 2017 – 2018 Grant Thornton 'Face of a Vibrant Economy,' a Fellow of the British Exploring Society, a trustee of Catch22 Multi-Academy Trust and a non-executive director at Capacity – the public services lab and a non-executive director at Big Society Capital. He is also the Chair of Catalyst Choices CIC and teaches on the Charity Masters' Programme at City University's business school. Chris's belief in social justice extends to his commitment to Nottingham Forest one day returning to the Clough glory years.

Wright, Stacey

Stacey has nearly 10 years of experience working in employability offering support to various people.

She began her career as a Teaching Assistant supporting children who needed additional support. Stacey then went onto create her own after school clubs which offered creative sessions to encourage young people to think positively which also supported their confidence.

Stacey's passion and drive has always been around making a positive impact and difference to others in need.

At Catch 22 Stacey is currently a Service Manager on the Jets Programme – She manages a Team of 16 soon to be 20.

Stacey enjoys creative writing and is a fun-loving mum to, two diva daughters!

